

规格承认书

Specification for approval



产品名称: **KG8** 系列开关放电管

Product Type: KG8 Series Switching Spark Gap

Ao littel Technology Co.Ltd.

Bld. 16, Yanhe East Road, Xiangdong Village, Dongguan 523833,
Guangdong, China

H.P.: 1371362419

Fax #: 0769-89390418

QQ #: 3217998702

Email: eric.lye@aolittel.com

<http://www.passivemall.com/>

<http://www.aolittel.com/>

1. Scope

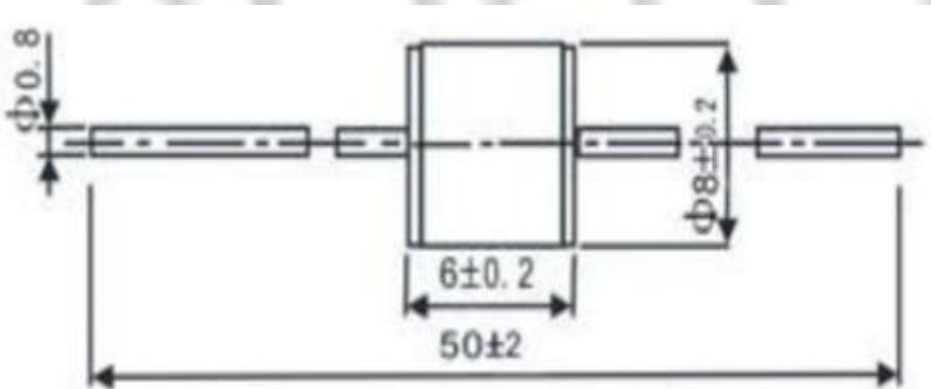
Switching Spark Gaps (SSG) are active components that work reliably even after igniting thousands of times. Switching Spark Gaps utilize the advantages of arc discharge principle: The enormous speed at which the arc is formed (<50 ns) as well as the high current capability allow the generation of short pulses of 10µs pulses with extremely high current or voltage rise times and low power loss. They can be used in all applications where high voltage pulses must be generated such as for the ignition of HID xenon lamps in automotive headlights.

2. Features

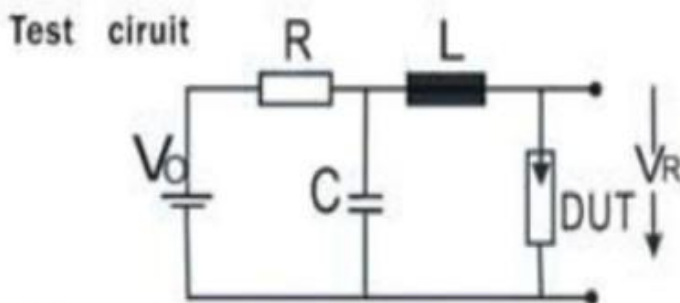
- ① Extremely long life time
- ② Stable performance over life
- ③ Insensitive performance against variations in temperature
- ④ Extremely low switching losses
- ⑤ Very short breakdown time
- ⑥ High reliability by robust design
- ⑦ RoHS compatible

3. Application : Ignition of HID lamps

4. Dimension (mm)



5. Test Circuit



DUT: Device under test

6. Electrical Performances

Part Number (No.)	DC Spark-over Voltage Deviation(V)	Ignition switch time	Peak discharge current(A)	Switching frequency(Hz)	Insulation resistance(Ω)	Capacitance (PF)	Breakdown time (ns)
KG8 110L	110 \pm (20%)	1000000	~ 300	70	≥ 1	<1.3	≤ 50
KG8 150L	150 \pm (15%)	1000000	~ 300	30	≥ 1	<1.3	≤ 50
KG8 230L	230 \pm (15%)	1000000	~ 300	20	≥ 1	<1.3	≤ 50
KG8 300L	300 \pm (12%)	400000	~ 500	130	≥ 1	<1.3	≤ 50
KG8 350L-	320 \pm (12%)	400000	~ 500	150	≥ 1	<1.3	≤ 50
KG8 350L	350 \pm (10%)	400000	~ 500	150	≥ 1	<1.3	≤ 50
KG8 350L+	370 \pm (10%)	400000	~ 500	140	≥ 1	<1.3	≤ 50
KG8 400L	400 \pm (10%)	400000	~ 500	130	≥ 1	<1.3	≤ 50
KG8 450L	450 \pm (10%)	300000	~ 500	120	≥ 1	<1.3	≤ 50
KG8 500L	500 \pm (10%)	300000	~ 400	170	≥ 1	<1.3	≤ 50
KG8 600L-	560 \pm (10%)	300000	~ 400	140	≥ 1	<1.3	≤ 50
KG8 600L	600 \pm (10%)	300000	~ 400	210	≥ 1	<1.3	≤ 50
KG8 800L-	730 \pm (10%)	300000	~ 400	130	≥ 1	<1.3	≤ 50
KG8 800L	800 \pm (10%)	300000	~ 400	120	≥ 1	<1.3	≤ 50